

GRINNELL COLLEGE



2004
REPORT ON ADMISSION
AT GRINNELL COLLEGE

PREPARED BY

The Grinnell College Office of Admission

DECEMBER, 2004

TABLE OF CONTENTS

Introduction	1-2
CHART I	Fall Semester Admission Statistics (Applied, Admitted, Matriculated), 1984-2004	3
CHART II	Early Decision Statistics, 1984-2004	4
CHART III	Regular Decision Statistics, 1984-2004	5
CHART IV	First-Year, Regular Decision Statistics, 1984-2004	6
CHART V	Transfer Statistics, 1994-2004	7
CHART VI	Spring Semester Admission Statistics, 1984-2004	8
CHART VII	Male/Female Matriculants, 1984-2004	9
CHART VIII	Admission Statistics (Gender) for Fall Semester, 2004	10
CHART IX	Secondary School Class Rank by Quintile, 1984-2004	11
CHART X	Secondary School Class Rank, First-Year Class	12
ILLUSTRATION A	Quality of First-Year Class by High School Rank	13
CHART XI	Average SAT and ACT Results, First-Year Class	14
CHART XII	SAT Score Distribution, First-Year Class	15-16
CHART XIII	ACT Score Distribution, First-Year Class	17
ILLUSTRATION B	Yield and Composition of First-Year Class by Admission Rating,	18
CHART XIV	Average SAT Results, All Matriculants, 1984-2004	19
CHART XV	Geographic Distribution by Home State (Applicants, Admits and Matriculants, 1999-2004)	20-21
ILLUSTRATION D	Students Enrolled by Geographic Region (Home State)	22
CHART XVI	U.S. Students of Color, Enrollment History, 1994-2004	23
ILLUSTRATION E	Ethnic Composition of Entering Class	24
CHART XVII	Secondary School Class Rank, First-Year Class, Multicultural	25
CHART XVIII	Average SAT and ACT Results, First-Year Class, Multicultural	26
CHART XIX	International Report, Fall 2004	27
CHART XX	Secondary School Class Rank, First-Year Class, International	28

CHART XXI	Average TOEFL Results, First-Year Class, International.....	29
CHART XXII	Average SAT and ACT Results, First-Year Class, International	30
CHART XXIII	High School Type, by Gender, First-Year Class	31
ILLUSTRATION F	Enrollment by High School Type, First-Year Class	32
CHART XXIV	Waiting List Action, 1994-2004	33
CHART XXV	First-Choice Major, Entering Class, 2000-2004	34
CHART XXVI	Extracurricular Profile, First-Year Class	35

INTRODUCTION

This report is being distributed to the faculty and administrative staff electronically and is available in hard copy to anyone who wishes a copy. It is prepared and distributed in the name of full disclosure and to enable all who so wish to learn a great deal about Grinnell College admission. It is hoped that the two faculty meeting admission discussions this semester (August and November), the College's admission website and the published meeting and annual summaries of the 2003-2004 work of the Faculty-Student Committee on Admission and Financial Aid also meet your needs for admission information. Finally, the entire enrollment division (admission and financial aid) staff and I remain available to respond to inquiries at any time. Here are a few highlights of the Report for your consideration:

APPLICATIONS

This may prove to have been the breakthrough application year we have anticipated and been building toward. Applications -- both *total* applications and *completed/actionable* applications -- increased by more than 20%. We received well over 3,700 applications and admitted about 40% of the students who applied. This is the largest applicant pool and highest selectivity index ever achieved by Grinnell College. So, why the breakthrough year?

- A. In recent years we have carefully and dramatically expanded our prospect pool, especially with secondary school sophomores. These prospects are now exiting the pipeline we have created.
- B. We have intentionally revamped our communication flow with prospective students. All prospects are not equal so we have divided them into three groups. The most desirable and most interested receive more information from the College, however, no one is neglected.
- C. In close cooperation with the Office of Communication, we have increased our general public visibility. For example, I worked closely in the summer of 2003 with Newsweek magazine to enable it to name Grinnell the best all-around college among America's so-called hot colleges of 2004. We then made certain that thousands of prospects knew of the College's selection.

GOALS

Virtually all new student enrollment goals for 2004 were met. The class is full (more about that in a moment), academic quality increased, applications increased, selectivity improved, the yield of admitted students increased, net tuition revenue expectations were met and ethnic diversity was largely maintained (in this regard, we are still dissatisfied and believe that for Grinnell to become a top ten institution we must continue to build a more ethnically diverse student body). We also enrolled ten new transfer students (the goal set for us) in January of 2004, the largest number in more than ten years. This was necessary due to the semester-to-semester imbalance of students studying off campus.

STAFF

There was no turnover in enrollment administrative staff in 2004. This increased continuity is crucial to our improving admission situation in an administrative area that is

significantly relationship based. A few excellent support staff moved to other College positions in 2003-04 and, fortunately, we were able to hire outstanding replacements.

OVER-ENROLLMENT

More new students were enrolled this fall unintentionally. This was primarily due to an increase in yield in a year when I anticipated a decrease. My prediction was based both on history and the fact that the applicant pool was academically better, applying to more colleges, more financially prosperous, living farther away, and receiving no increase in merit scholarships. I was wrong, and as a result of admitting more students and increasing our yield, we enrolled more students than planned. Therefore, after two larger than planned entering classes and increased retention, we have lowered our new student enrollment target for the fall of 2005.

THE CLASS

- A. The number of Early Decision (ED) candidates and the yield of ED admits set school records.
- B. The class is 54.8% women, a smaller percentage than many top arts and sciences colleges.
- C. 88.2% graduated in the top 10% of their secondary school class, also a record.
- D. The mean SAT is 1367 and the median is 1390. The mean and median ACT is over 30.
- E. The class represents 40 U.S. states and the District of Columbia. The student body continues to have students from all 50 states and Washington, DC.
- F. 49% come from the Midwest as broadly defined.
- G. 13.4% are U.S. students of color, down a bit compared to 2003. However, as unhappy as we may be in this regard, you should all know that this is the third highest number of enrolled U.S. students of color in ten years (2003 was the highest).
- H. Biology and English continue to be the intended majors students list most frequently in their applications. Mathematics is number three, entering the top five for the first time in at least five years. Physics is number seven and for the first time in at least five years is listed in the top seven.
- I. We enrolled 60 new international students from 34 countries, both College records. We will reduce this number by at least 25% for 2005.

Lastly, I especially want to thank the many professors and staff who helped make this a banner enrollment year by most accounts and measurements. Seldom did I ask a department or individual for admission assistance and not receive a quick, positive response. Faculty and staff contributed hundreds of hours in a wide variety of ways, both on and off campus, to help enroll the best students. Likewise, Connie Newport, a key administrator in the Office of Admission has earned a special thank you for preparing the data contained in this report.

Jim Sumner
Dean of Admission and Financial Aid
December 2004

CHART I
FALL SEMESTER ADMISSION STATISTICS
(APPLIED, ADMITTED, MATRICULATED)
1984-2004

	Applied	Admitted	% Admitted	Matriculated	% Matriculated
1984	1209	1009	83.5%	433	42.9%
1985	1343	1036	77.1%	426	41.1%
1986	1773	1028	58.0%	381	37.1%
1987	1813	1101	60.7%	359	32.6%
1988	1955	1121	57.3%	386	34.4%
1989	1881	1238	65.8%	399	32.2%
1990	1755	1184	67.5%	386	32.6%
1991	1717	1056	61.5%	373	35.3%
1992	2015	1225	60.8%	348	28.4%
1993	2212	1510	68.3%	489	32.4%
1994	2299	1250	54.4%	369	29.5%
1995	2170	1463	67.4%	367	25.1%
1996	2120	1397	65.9%	393	28.1%
1997	2918	1472	50.4%	465	31.6%
1998	2832	1231	43.5%	380	30.9%
1999	2476	1239	50.0%	356	28.7%
2000	2886	1303	45.1%	391	30.0%
2001	2960	1362	46.0%	401	29.4%
2002	3042	1405	46.2%	398	28.3%
2003	3058	1482	48.5%	418	28.2%
2004	3733	1543	41.3%	454	29.4%

Applied and Admitted totals include twelve (12) deferrals to Fall 2005
and three (3) special exchange students.

**CHART II
EARLY DECISION, FALL SEMESTERS, 1984-2004**

	APPLIED	ADMITTED	% ADMITTED	MATRICULATED	% MATRICULATED
1984	105	92	87.6%	71	77.2%
1985	100	83	83.0%	64	77.1%
1986	186	134	72.0%	107	79.9%
1987	182	117	64.3%	77	65.8%
1988	163	113	69.3%	84	74.3%
1989	138	91	65.9%	65	71.4%
1990	172	132	76.7%	104	78.8%
1991	151	121	80.1%	92	76.0%
1992	138	108	78.3%	82	75.9%
1993	147	108	73.5%	78	72.2%
1994	142	103	72.5%	77	74.8%
1995	105	76	72.4%	66	86.8%
1996	71	53	74.6%	45	84.9%
1997	89	59	66.3%	51	86.4%
1998	91	64	70.3%	60	93.8%
1999	88	41	46.6%	35	85.4%
2000	78	49	62.8%	45	91.8%
2001	66	43	65.2%	39	90.7%
2002	72	57	79.2%	53	93.0%
2003	119	94	79.0%	88	93.6%
2004	134	97	72.4%	90	92.8%

Applied and Admitted totals include two (2) deferrals to Fall 2005.

**CHART III
REGULAR DECISION, FALL SEMESTERS, 1984-2004
ALL NEW STUDENTS - FIRST-YEAR AND TRANSFER**

	APPLIED	ADMITTED	% ADMITTED	MATRICULATED	% MATRICULATED
1984	1104	917	83.1%	362	39.5%
1985	1243	953	76.7%	362	38.0%
1986	1587	894	56.3%	274	30.6%
1987	1631	984	60.3%	282	28.7%
1988	1792	1008	56.3%	302	30.0%
1989	1743	1147	65.8%	334	29.1%
1990	1583	1052	66.5%	282	26.8%
1991	1566	935	59.7%	281	30.1%
1992	1877	1117	59.5%	266	23.8%
1993	2065	1402	67.9%	408	29.1%
1994	2157	1147	53.2%	292	25.5%
1995	2065	1387	67.2%	301	21.7%
1996	2049	1344	65.6%	348	25.9%
1997	2829	1413	49.9%	414	29.3%
1998	2754	1167	42.4%	320	27.4%
1999	2412	1198	49.7%	321	26.8%
2000	2808	1254	44.7%	346	27.6%
2001	2894	1319	45.6%	362	27.4%
2002	2970	1348	45.4%	345	25.6%
2003	2939	1388	47.2%	330	23.8%
2004	3599	1446	40.2%	364	25.2%

Applied and Admitted totals include ten (10) deferrals to Fall 2005.

**CHART IV
FIRST-YEAR STATISTICS - REGULAR DECISION
FALL SEMESTERS, 1994-2004**

	APPLIED	ADMITTED	% ADMITTED	MATRICULATED	% MATRICULATED
1994	2127	1186	55.8%	340	28.7%
1995	1901	1270	66.8%	246	19.4%
1996	1893	1270	67.1%	317	25.0%
1997	2619	1337	51.1%	380	28.4%
1998	2552	1108	43.4%	292	26.4%
1999	2217	1134	51.2%	290	25.6%
2000	2589	1200	46.3%	346	28.8%
2001	2635	1238	47.0%	321	25.9%
2002	2706	1279	47.3%	316	24.7%
2003	2730	1349	49.4%	317	23.5%
2004	3418	1404	41.1%	345	24.6%

Applied and Admitted totals include nine (9) deferrals to Fall 2005.

CHART V
TRANSFER STATISTICS, FALL SEMESTERS, 1994-2004

	APPLIED	ADMITTED	% ADMITTED	MATRICULATED	% MATRICULATED
1994	169	61	36.1%	27	44.3%
1995	164	117	71.3%	55	47.0%
1996	156	74	47.4%	31	41.9%
1997	212	78	36.8%	36	46.2%
1998	193	51	26.4%	23	45.1%
1999	195	64	32.8%	31	48.4%
2000	219	54	24.7%	26	48.1%
2001	259	81	31.3%	41	50.6%
2002	264	69	26.1%	29	42.0%
2003	209	39	18.7%	13	33.3%
2004	181	42	23.2%	19	45.2%

Applied and Admitted totals include one (1) deferral to Fall 2005.

**CHART VI
SPRING ADMISSION STATISTICS, 1984-2004**

	APPLIED	ADMITTED	% ADMITTED	MATRICULATED	% MATRICULATED
1984	27	20	74.1%	18	90.0%
1985	25	18	72.0%	14	77.8%
1986	19	7	36.8%	6	85.7%
1987	23	16	69.6%	12	75.0%
1988	19	14	73.7%	10	71.4%
1989	18	2	11.1%	2	100.0%
1990	12	2	16.7%	2	100.0%
1991	34	26	76.5%	17	65.4%
1992	19	8	42.1%	7	87.5%
1993	53	41	77.4%	18	43.9%
1994	13	2	15.4%	2	100.0%
1995	16	5	31.3%	4	80.0%
1996	16	10	62.5%	7	70.0%
1997	26	7	26.9%	6	85.7%
1998	35	10	28.6%	6	60.0%
1999	11	7	63.6%	3	42.9%
2000	21	6	28.6%	5	83.3%
2001	28	8	28.6%	5	62.5%
2002	31	15	48.4%	8	53.3%
2003	17	9	52.9%	7	77.8%
2004	38	20	52.6%	10	50.0%

**CHART VII
TABLE OF MALE/FEMALE MATRICULANTS
FALL SEMESTERS, 1984-2004**

	MEN	% OF ENTERING CLASS	WOMEN	% OF ENTERING CLASS	TOTAL MATRICULATED
1984	219	50.6%	214	49.4%	433
1985	204	47.9%	222	52.1%	426
1986	204	53.5%	177	46.5%	381
1987	196	54.6%	163	45.4%	359
1988	206	53.4%	180	46.6%	386
1989	190	47.6%	209	52.4%	399
1990	197	51.0%	189	49.0%	386
1991	159	42.6%	214	57.4%	373
1992	149	42.8%	199	57.2%	348
1993	235	48.1%	254	51.9%	489
1994	161	43.9%	206	56.1%	367
1995	170	46.3%	197	53.7%	367
1996	161	41.0%	232	59.0%	393
1997	200	43.0%	265	57.0%	465
1998	168	44.2%	212	55.8%	380
1999	172	48.3%	184	51.7%	356
2000	164	41.9%	227	58.1%	391
2001	189	47.1%	212	52.9%	401
2002	178	44.7%	220	55.3%	398
2003	195	46.7%	223	53.3%	418
2004	205	45.2%	249	54.8%	454

Total matriculated includes three (3) special exchange students.

**CHART VIII
ADMISSION STATISTICS BY GENDER
FALL SEMESTER, 2004**

	Applied	Actionable	Admitted	% Admitted	Matriculated	% Matriculated	Deny	Withdrew	Incomplete	Admit/ Withdrew	Paid/ Withdrew
First-Year (Male)	1712	1421	675	47.5%	197	29.2%	717	71	249	460	11
First-Year (Female)	1840	1549	826	53.3%	238	28.8%	684	104	226	568	16
Transfer (Male)	89	56	16	28.6%	7	43.8%	40	10	23	8	1
Transfer (Female)	89	62	23	37.1%	9	39.1%	38	12	16	12	1
Transfer (Unknown)	0	0	0	0.0%	0	0.0%	0	0	0	0	0
Special Exch. (Male)	1	1	1	100.0%	1	100.0%	0	0	0	0	0
Special Exch. (Female)	2	2	2	100.0%	2	100.0%	0	0	0	0	0
TOTALS	3733	3091	1543	49.9%	454	29.4%	1479	197	514	1048	29

Applied and Admitted totals include twelve (12) deferrals to Fall 2005.

CHART IX
SECONDARY SCHOOL CLASS RANK BY QUINTILE - ALL MATRICULANTS
FALL SEMESTERS, 1984-2004

	I	%	II	%	III	%	IV	%	V	%	UNKNOWN	TOTAL
1984	313	80.5%	53	13.6%	16	4.1%	6	1.5%	1	0.3%	44	433
1985	289	73.4%	90	22.8%	10	2.5%	5	1.3%	0	0.0%	32	426
1986	269	79.4%	57	16.8%	6	1.8%	4	1.2%	3	0.9%	42	381
1987	271	86.9%	30	9.6%	9	2.9%	1	0.3%	1	0.3%	47	359
1988	289	83.0%	45	12.9%	10	2.9%	3	0.9%	1	0.3%	38	386
1989	281	82.4%	42	12.3%	15	4.4%	3	0.9%	0	0.0%	58	399
1990	256	78.0%	55	16.8%	13	3.9%	3	0.9%	1	0.3%	58	386
1991	248	79.0%	44	14.0%	16	5.1%	4	1.3%	2	0.6%	59	373
1992	242	85.5%	28	9.9%	9	3.2%	3	1.1%	1	0.4%	65	348
1993	340	84.8%	41	10.2%	13	3.2%	5	1.2%	2	0.5%	82	483
1994	267	86.1%	35	11.3%	6	2.0%	1	0.3%	1	0.3%	59	369
1995	237	80.6%	49	16.7%	5	1.7%	2	0.7%	1	0.3%	73	367
1996	259	82.5%	43	13.7%	12	3.8%	0	0.0%	0	0.0%	79	393
1997	311	86.4%	46	12.8%	2	0.5%	1	0.3%	0	0.0%	105	465
1998	275	86.2%	38	11.9%	4	1.3%	1	0.3%	1	0.3%	61	380
1999	231	79.9%	54	18.7%	4	1.4%	0	0.0%	0	0.0%	69	358
2000	252	85.7%	38	12.9%	3	1.0%	1	0.3%	0	0.0%	97	391
2001	240	83.3%	43	14.9%	3	1.0%	2	0.7%	0	0.0%	113	401
2002	215	81.7%	41	15.6%	4	1.5%	1	0.4%	2	0.8%	135	398
2003	247	81.3%	50	16.4%	7	2.3%	0	0.0%	0	0.0%	114	418
2004	283	88.2%	36	11.2%	2	0.6%	0	0.0%	0	0.0%	133	454

Percentages based on a total of 321 matriculants whose class rank was reported.

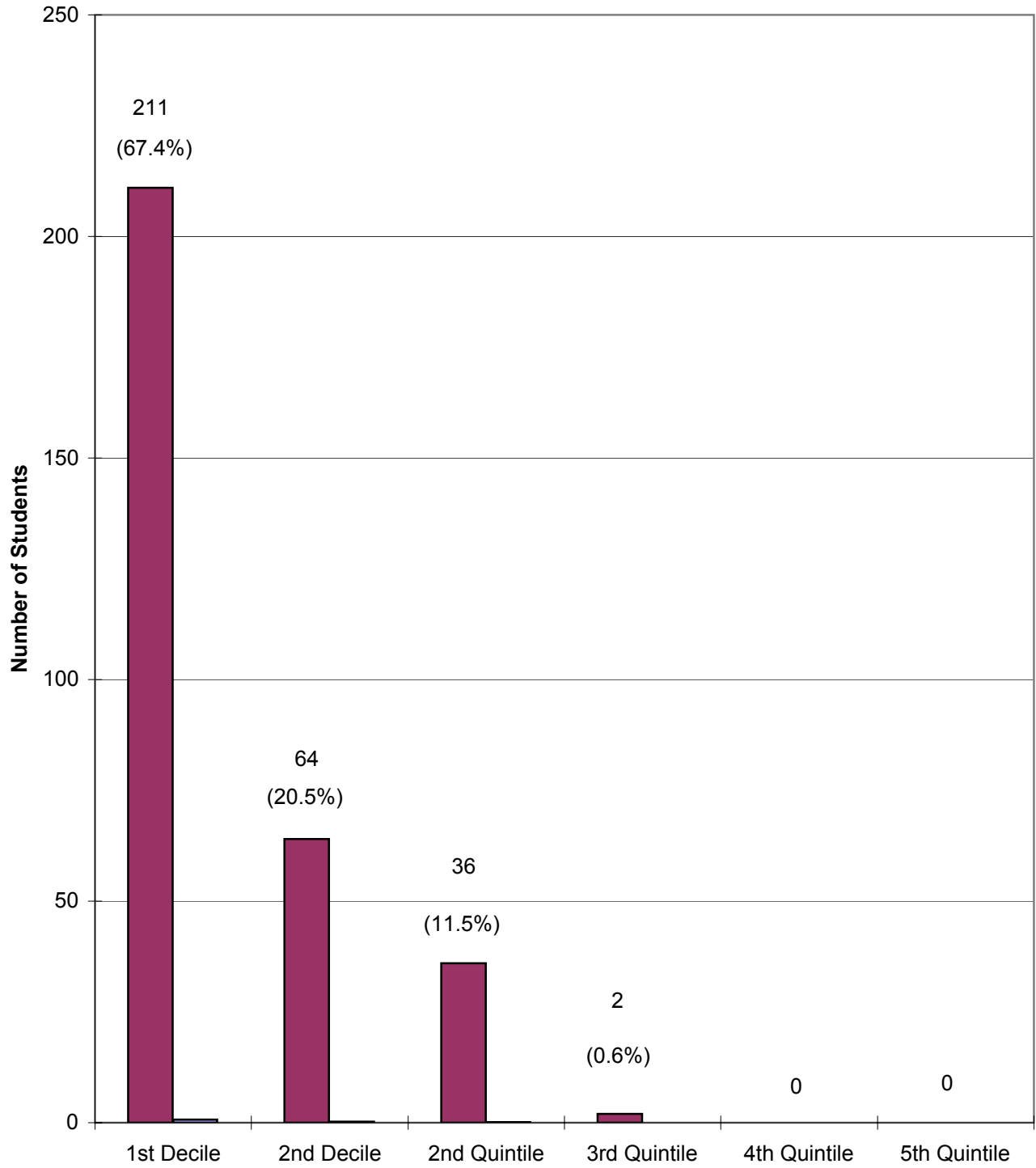
CHART X
FIRST-YEAR CLASS, FALL 2004
SECONDARY SCHOOL CLASS RANK - FIRST AND SECOND DECILES, SECOND THROUGH FIFTH QUINTILES

APPLIED (3552)	1ST DECILE		2ND DECILE		2ND QUINTILE		3RD QUINTILE		4TH QUINTILE		5TH QUINTILE	
	No.	%	No.	%	No.	%	No.	%	No.	%	No.	%
	FEMALE	656	63.9%	214	20.8%	122	11.9%	28	2.7%	6	0.6%	1
MALE	445	50.1%	188	21.2%	185	20.8%	56	6.3%	13	1.5%	1	0.1%
COMBINED	1101	57.5%	402	21.0%	307	16.0%	84	4.4%	19	1.0%	2	0.1%
NOT RANKED=1637												

ADMITTED (1501)	1ST DECILE		2ND DECILE		2ND QUINTILE		3RD QUINTILE		4TH QUINTILE		5TH QUINTILE	
	No.	%	No.	%	No.	%	No.	%	No.	%	No.	%
	FEMALE	441	80.2%	83	15.1%	24	4.3%	2	0.4%	0	0.0%	0
MALE	314	69.0%	92	20.2%	47	10.3%	2	0.5%	0	0.0%	0	0.0%
COMBINED	755	75.1%	175	17.4%	71	7.1%	4	0.4%	0	0.0%	0	0.0%
NOT RANKED=496												

MATRICULATED (435)	1ST DECILE		2ND DECILE		2ND QUINTILE		3RD QUINTILE		4TH QUINTILE		5TH QUINTILE	
	No.	%	No.	%	No.	%	No.	%	No.	%	No.	%
	FEMALE	125	73.5%	33	19.4%	11	6.5%	1	0.6%	0	0.0%	0
MALE	86	60.1%	31	21.7%	25	17.5%	1	0.7%	0	0.0%	0	0.0%
COMBINED	211	67.4%	64	20.5%	36	11.5%	2	0.6%	0	0.0%	0	0.0%
NOT RANKED=122												

ILLUSTRATION A
QUALITY OF FIRST-YEAR CLASS
BY HIGH SCHOOL RANK INCLASS



**CHART XI
FIRST-YEAR CLASS, FALL 2004
AVERAGE STANDARDIZED TEST RESULTS**

SCHOLASTIC ASSESSMENT TEST - SAT

	APPLIED			ADMITTED			MATRICULATED		
	Verbal	Math	Number	Verbal	Math	Number	Verbal	Math	Number
FEMALE	663	655	1048	700	685	525	691	671	137
MALE	642	682	1048	682	711	446	678	695	124
COMBINED	653	669	2096	692	697	971	684	683	261

AMERICAN COLLEGE TEST - ACT

	APPLIED		ADMITTED		MATRICULATED	
	COM	NUM	COM	NUM	COM	NUM
FEMALE	28.2	568	29.9	293	29.8	98
MALE	29.2	442	30.6	223	30.3	71
COMBINED	28.6	1010	30.2	516	30	169

ACT KEY: COM=Composite, NUM=Number

**CHART XII
FIRST-YEAR CLASS, FALL 2004
SAT SCORE DISTRIBUTION - VERBAL**

RANGE	GENDER	APPLIED	ADMITTED	DENIED	MATRICULATED	PERCENT OF CLASS
	MALE	165	112	38	38	
750-800	FEMALE	216	158	41	40	
	COMBINED	381	270	79	78	29.9%
	MALE	191	109	73	19	
700-740	FEMALE	203	130	60	29	
	COMBINED	394	239	133	48	18.4%
	MALE	204	90	99	24	
650-690	FEMALE	250	132	92	33	
	COMBINED	454	222	191	57	21.8%
	MALE	183	70	99	20	
600-640	FEMALE	163	62	81	20	
	COMBINED	346	132	180	40	15.3%
	MALE	124	37	74	12	
550-590	FEMALE	103	30	65	8	
	COMBINED	227	67	139	20	7.7%
	MALE	85	17	60	7	
500-540	FEMALE	51	11	37	7	
	COMBINED	136	28	97	14	5.4%
	MALE	62	8	48	3	
450-490	FEMALE	31	2	28	0	
	COMBINED	93	10	76	3	1.1%
	MALE	25	3	18	1	
400-440	FEMALE	22	0	15	0	
	COMBINED	47	3	33	1	0.4%
	MALE	9	0	6	0	
Below 400	FEMALE	9	0	7	0	
	COMBINED	18	0	13	0	0.0%

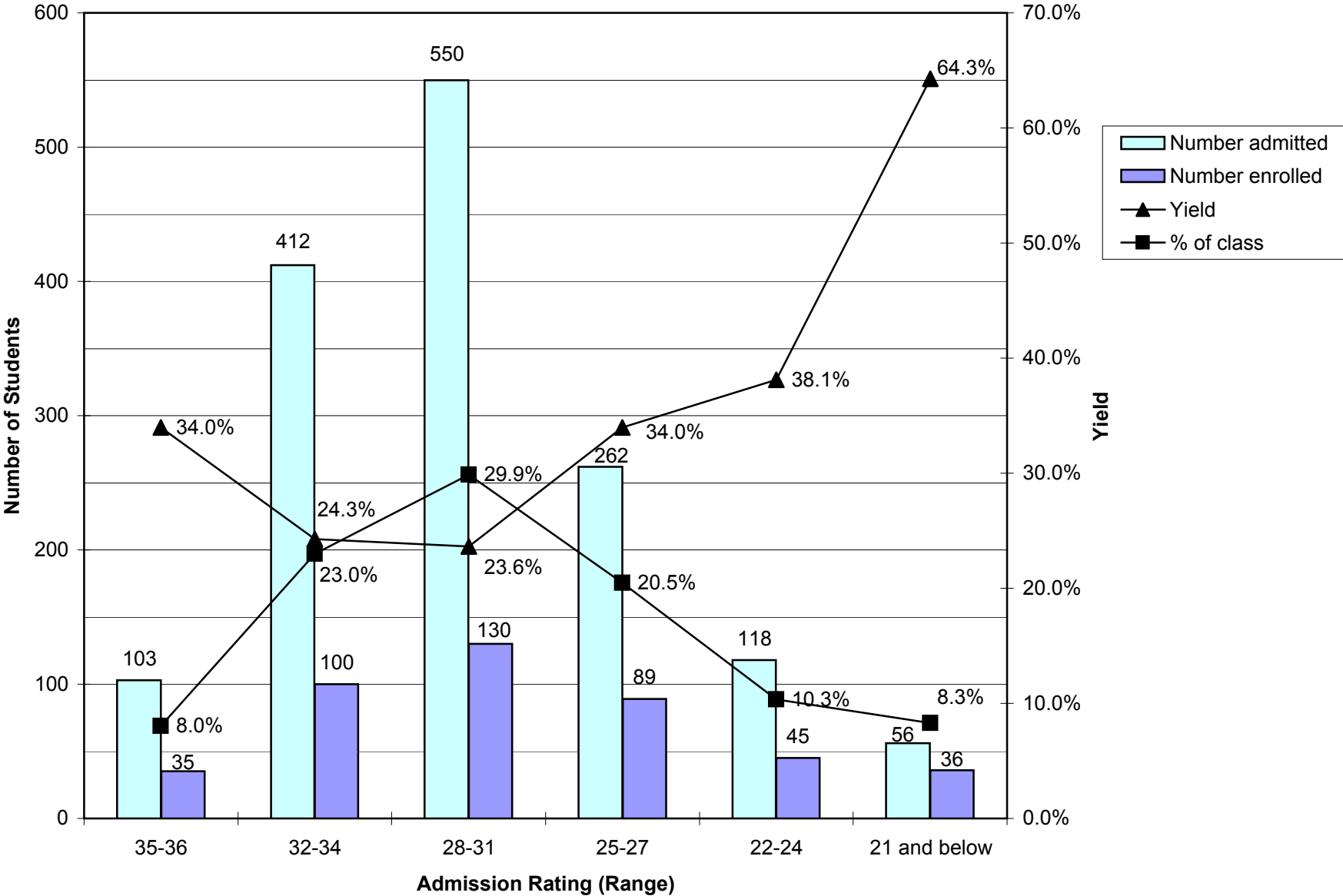
**CHART XII
FIRST-YEAR CLASS, FALL 2004
SAT SCORE DISTRIBUTION - MATH**

RANGE	GENDER	APPLIED	ADMITTED	DENIED	MATRICULATED	PERCENT OF CLASS
	MALE	249	155	79	26	
750-800	FEMALE	131	93	27	17	
	COMBINED	380	248	106	43	16.5%
	MALE	257	131	111	41	
700-740	FEMALE	216	142	57	37	
	COMBINED	473	273	168	78	29.9%
	MALE	244	90	138	35	
650-690	FEMALE	272	159	85	41	
	COMBINED	516	249	223	76	29.1%
	MALE	149	39	94	11	
600-640	FEMALE	210	87	102	28	
	COMBINED	359	126	196	39	14.9%
	MALE	77	21	44	6	
550-590	FEMALE	121	30	81	7	
	COMBINED	198	51	125	13	5.0%
	MALE	38	7	27	2	
500-540	FEMALE	65	12	47	7	
	COMBINED	103	19	74	9	3.4%
	MALE	21	2	13	2	
450-490	FEMALE	19	2	13	0	
	COMBINED	40	4	26	2	0.8%
	MALE	11	1	7	1	
400-440	FEMALE	6	0	6	0	
	COMBINED	17	1	13	1	0.4%
	MALE	2	0	2	0	
Below 400	FEMALE	8	0	8	0	
	COMBINED	10	0	10	0	0.0%

**CHART XIII
FIRST-YEAR CLASS, 2004
ACT SCORE DISTRIBUTION**

COMPOSITE	GENDER	APPLIED	ADMITTED	DENIED	MATRICULATED	PERCENT OF CLASS
	MALE	53	44	9	10	
34-36	FEMALE	30	25	4	9	
	COMBINED	83	69	13	19	11.2%
	MALE	87	57	24	17	
32-33	FEMALE	86	68	11	23	
	COMBINED	173	125	35	40	23.7%
	MALE	89	50	29	19	
30-31	FEMALE	117	75	32	25	
	COMBINED	206	125	61	44	26.0%
	MALE	75	31	36	10	
28-29	FEMALE	134	77	47	20	
	COMBINED	209	108	83	30	17.8%
	MALE	103	36	52	14	
24-27	FEMALE	127	41	78	19	
	COMBINED	230	77	130	33	19.5%
	MALE	28	5	15	1	
20-23	FEMALE	62	6	44	2	
	COMBINED	90	11	59	3	1.8%
	MALE	6	0	4	0	
17-19	FEMALE	9	1	7	0	
	COMBINED	15	1	11	0	0.0%
	MALE	1	0	1	0	
BELOW 16	FEMALE	3	0	1	0	
	COMBINED	4	0	2	0	0.0%

**ILLUSTRATION B
YIELD AND COMPOSITION OF CLASS
BY ADMISSION RATING**



**CHART XIV
AVERAGE SAT RESULTS
ALL MATRICULANTS - FALL SEMESTERS, 1984-2004**

	SAT VERBAL	SAT MATH
1984	580	610
1985	590	611
1986	601	632
1987	607	634
1988	611	646
1989	604	636
1990	602	634
1991	608	633
1992	596	634
1993	602	642
1994	606	653
1995	595	637
1996	673	646
1997	674	659
1998	674	664
1999	668	658
2000	673	660
2001	668	665
2002	675	660
2003	666	671
2004	684	683

BEGINNING IN 1996, SAT I SCORES ARE
REPORTED ON THE RECENTERED SCALE

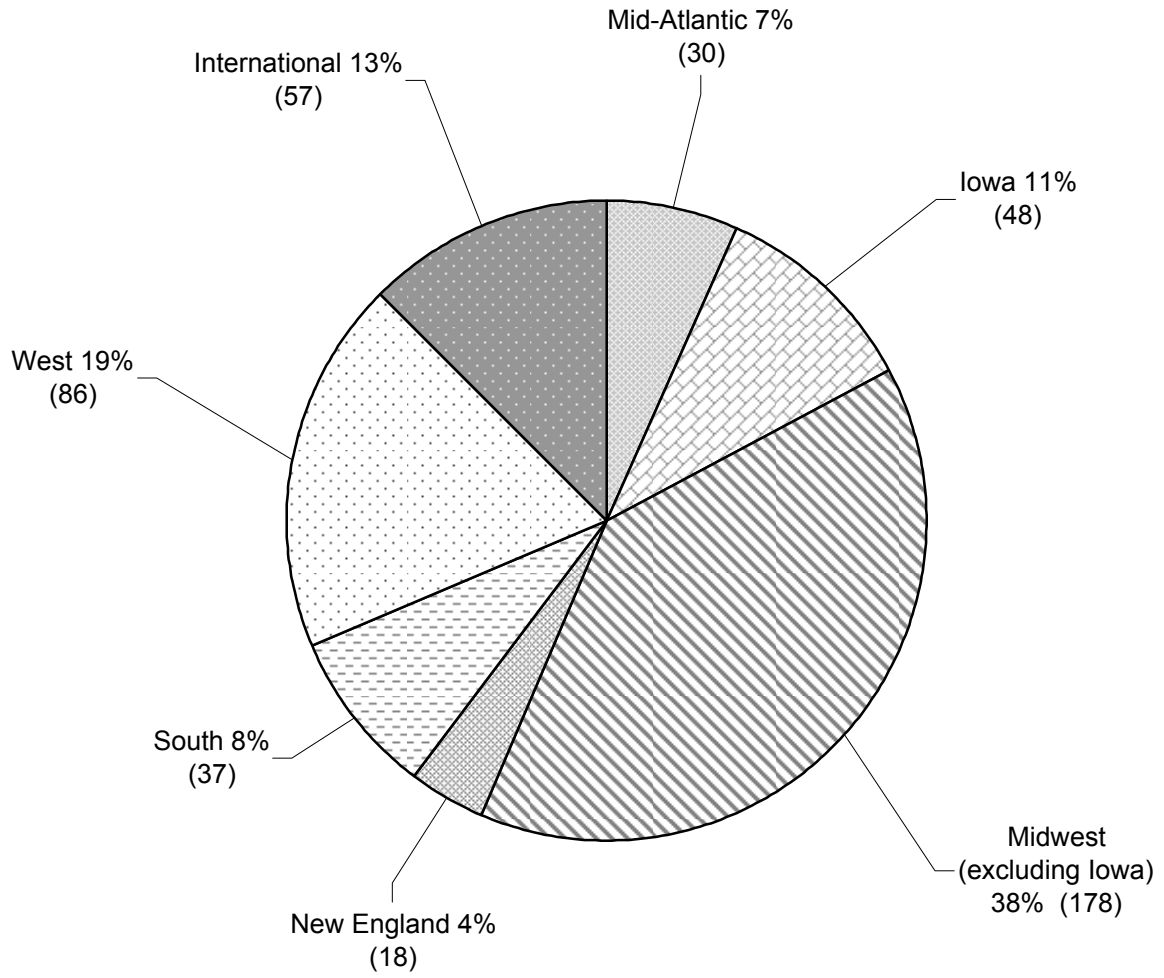
**CHART XV
DISTRIBUTION BY HOME STATE
APPLICANTS (A), ADMITS (AD) AND MATRICULANTS (M)**

	1999			2000			2001			2002			2003			2004		
	A	AD	M	A	AD	M	A	AD	M	A	AD	M	A	AD	M	A	AD	M
ALABAMA	8	3	2	11	2	1	6	5	2	14	5	0	7	3	1	9	5	1
ALASKA	6	4	1	5	3	1	4	3	1	6	4	0	5	2	1	10	5	0
ARIZONA	11	5	2	22	8	3	22	13	3	28	12	6	31	19	2	30	11	4
ARKANSAS	8	7	1	26	14	3	22	16	5	20	12	3	23	8	3	29	12	1
CALIFORNIA	145	79	15	168	79	17	137	72	12	169	80	20	192	112	39	310	116	27
COLORADO	67	38	11	54	37	20	61	32	6	63	39	10	63	36	9	71	35	13
CONNECTICUT	17	7	2	30	14	3	25	12	3	18	13	4	26	11	5	29	13	5
DELAWARE	3	1	0	2	1	0	3	3	1	3	3	1	0	0	0	3	1	0
WASH. , DC	7	1	0	22	9	0	20	7	4	14	7	2	15	5	1	12	8	2
FLORIDA	19	7	2	32	16	2	21	7	3	30	16	7	31	18	6	30	11	1
GEORGIA	13	8	0	19	13	3	25	13	5	21	9	3	18	9	1	22	11	1
GUAM	0	0	0	1	0	0	1	1	1	1	1	0	0	0	0	0	0	0
HAWAII	9	6	1	10	7	3	7	5	1	22	15	5	9	6	4	26	13	1
IDAHO	5	3	0	2	2	1	4	2	1	3	2	0	7	4	2	4	1	0
ILLINOIS	223	118	32	258	118	44	274	152	44	272	155	55	345	186	50	409	177	57
INDIANA	31	18	3	53	33	13	33	21	5	34	23	8	46	30	4	46	30	10
IOWA	204	120	50	241	114	48	237	124	62	208	111	41	227	116	57	225	102	48
KANSAS	41	23	7	40	20	7	55	33	11	53	32	16	43	23	12	63	34	14
KENTUCKY	10	6	1	7	4	0	8	4	2	12	9	1	11	6	1	15	11	3
LOUISIANA	6	3	1	7	4	1	14	6	3	10	2	1	10	5	1	6	1	1
MAINE	13	11	5	26	13	4	17	14	5	6	3	0	9	6	3	13	8	3
MARYLAND	31	18	8	50	30	10	42	19	6	41	27	8	42	22	6	42	17	4
MASSACHUSETTS	63	29	11	63	25	8	64	36	14	44	26	7	53	26	7	78	30	9
MICHIGAN	39	20	4	34	15	4	52	25	7	28	12	2	57	29	11	51	22	8
MINNESOTA	149	97	24	141	82	24	142	85	27	159	102	29	148	100	28	197	98	36
MISSISSIPPI	1	0	0	6	0	0	10	8	1	10	3	0	19	9	4	28	10	3

**CHART XV
DISTRIBUTION BY HOME STATE
APPLICANTS (A), ADMITS (AD) AND MATRICULANTS (M)**

CHART XI, PAGE 2	1999			2000			2001			2002			2003			2004		
	A	AD	M	A	AD	M	A	AD	M	A	AD	M	A	AD	M	A	AD	M
MISSOURI	65	38	13	78	49	15	65	33	7	87	58	12	75	47	12	89	49	10
MONTANA	9	6	2	2	2	1	6	4	0	2	1	0	5	1	0	6	2	1
NEBRASKA	38	21	3	30	14	4	31	12	3	26	13	5	24	15	5	30	20	8
NEVADA	8	6	3	6	3	1	5	3	2	3	1	0	4	4	2	8	1	1
NEW HAMPSHIRE	5	5	1	16	7	2	9	6	1	7	3	0	7	1	0	15	4	0
NEW JERSEY	27	13	4	40	17	5	25	12	3	37	20	6	29	21	7	49	23	6
NEW MEXICO	21	12	3	27	12	2	30	18	3	25	15	3	20	10	1	24	16	5
NEW YORK	93	48	14	109	59	17	93	57	13	99	54	20	95	60	9	114	37	12
NORTH CAROLINA	16	9	3	21	10	5	34	15	1	16	9	2	16	7	0	19	8	3
NORTH DAKOTA	5	3	0	8	4	1	4	1	0	6	5	1	3	2	1	1	0	0
OHIO	48	26	11	47	30	10	32	22	8	40	21	6	61	39	14	72	45	13
OKLAHOMA	13	8	3	15	8	3	13	7	1	11	5	1	9	5	3	12	7	2
OREGON	40	28	5	28	15	5	32	19	4	40	28	5	35	24	3	71	43	13
PENNSYLVANIA	43	23	5	40	21	6	46	21	7	29	14	5	38	19	4	44	17	6
PUERTO RICO	0	0	0	1	1	1	0	0	0	2	0	0	0	0	0	3	1	0
RHODE ISLAND	6	4	2	4	4	2	3	2	2	4	4	2	1	1	0	4	2	1
SOUTH CAROLINA	5	2	1	10	5	2	11	3	2	10	2	0	6	3	1	9	7	2
SOUTH DAKOTA	16	7	1	15	6	2	7	6	3	7	4	2	5	5	1	14	12	6
TENNESSEE	17	12	1	24	12	4	22	9	1	22	11	3	31	21	3	27	14	5
TEXAS	93	40	19	102	46	9	114	49	16	154	51	13	100	52	12	146	58	13
UTAH	12	7	4	22	10	1	18	10	2	15	9	3	11	7	2	12	8	3
VERMONT	6	3	1	7	5	2	6	4	0	8	5	4	3	1	0	6	3	0
VIRGIN ISLANDS	0	0	0	1	0	0	0	0	0	0	0	0	0	0	0	0	0	0
VIRGINIA	31	14	6	37	17	4	25	11	4	23	18	2	25	11	6	28	16	3
WASHINGTON	60	39	16	61	29	7	52	29	12	52	32	10	44	25	2	92	57	15
WEST VIRGINIA	6	5	3	5	4	2	3	2	1	1	1	1	6	5	2	4	3	0
WISCONSIN	71	45	9	88	45	17	69	44	14	80	49	20	87	56	24	99	48	14
WYOMING	2	1	1	5	4	0	8	4	1	3	1	1	7	4	2	6	5	3

ILLUSTRATION D
STUDENTS ENROLLED BY GEOGRAPHIC REGION
(HOME STATE)



**CHART XVI
U.S. STUDENTS OF COLOR
ENROLLMENT HISTORY, 1994-2004**

	<i>Class size</i>	<i>U.S. Multicultural</i>	<i>Percent of Class</i>	<i>African-American</i>	<i>Percent of Class</i>	<i>Latino/a</i>	<i>Percent of Class</i>	<i>Asian-American</i>	<i>Percent of Class</i>	<i>Native American</i>	<i>Percent of Class</i>	<i>**Unknown ethnicity</i>	<i>Percent of Class</i>
1994	367	55	15.0%	21	5.7%	13	3.5%	18	4.9%	3	0.8%	0	0.0%
1995	367	45	12.3%	13	3.5%	18	4.9%	9	2.5%	5	1.4%	0	0.0%
1996	393	50	12.7%	13	3.3%	18	4.6%	19	4.8%	0	0.0%	0	0.0%
1997	451	50	11.1%	7	1.6%	22	4.9%	18	4.0%	3	0.7%	2	0.4%
1998	380	44	11.6%	11	2.9%	14	3.7%	19	5.0%	0	0.0%	32	8.4%
1999	356	54	15.2%	11	3.1%	22	6.2%	19	5.3%	2	0.6%	28	7.9%
2000	391	50	12.8%	18	4.6%	15	3.8%	15	3.8%	2	0.5%	43	11.0%
2001	401	53	13.2%	19	4.7%	13	3.2%	17	4.2%	4	1.0%	39	9.7%
2002	398	38	9.5%	7	1.8%	10	2.5%	19	4.8%	2	0.5%	39	9.8%
2003	418	71	17.0%	19	4.5%	21	5.0%	25	6.0%	6	1.4%	13	3.1%
2004	454	61	13.4%	18	4.0%	17	3.7%	25	5.5%	1	0.2%	27	5.9%

**Beginning in 1998, there was a change in how this category was reported.

ILLUSTRATION E
ETHNIC COMPOSITION OF ENTERING CLASS

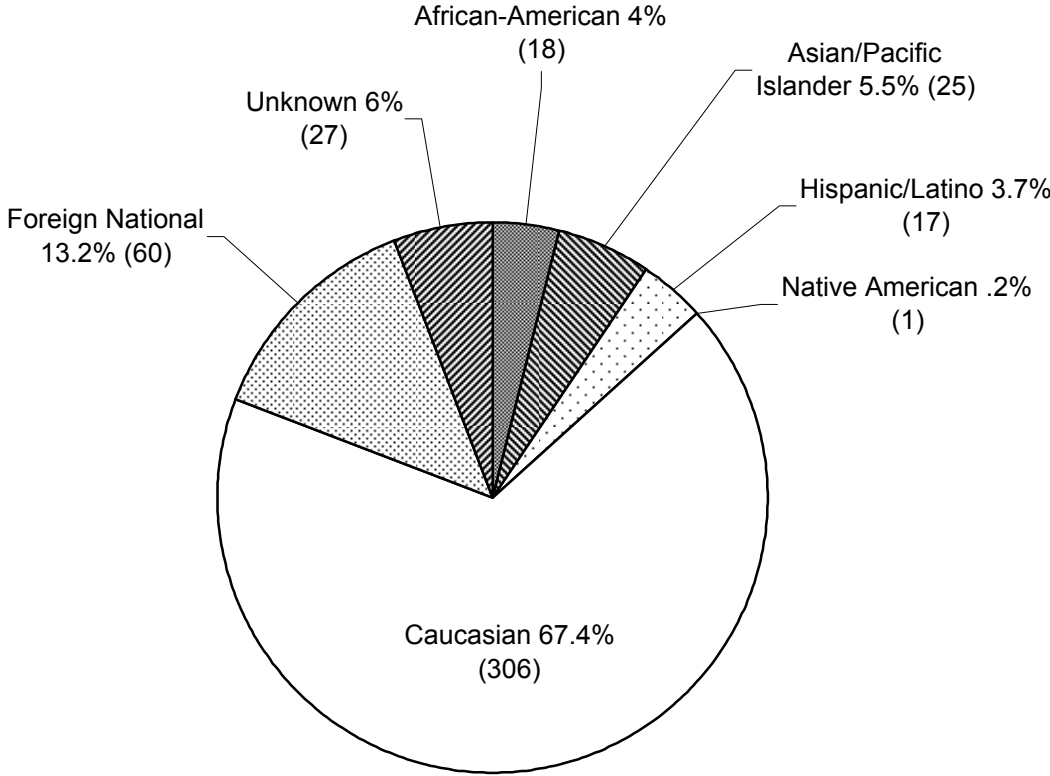


CHART XVII
FIRST-YEAR CLASS, 2004 - MULTICULTURAL (excludes students who did not self identify)
SECONDARY SCHOOL CLASS RANK - FIRST AND SECOND DECILES, SECOND THROUGH FIFTH QUINTILES

APPLIED (730)												
	1ST DECILE		2ND DECILE		2ND QUINTILE		3RD QUINTILE		4TH QUINTILE		5TH QUINTILE	
	No.	%	No.	%	No.	%	No.	%	No.	%	No.	%
FEMALE	145	56.9%	59	23.1%	35	13.7%	11	4.3%	4	1.6%	1	0.4%
MALE	78	48.2%	34	21.0%	31	19.1%	17	10.5%	2	1.2%	0	0.0%
COMBINED	223	53.6%	93	22.3%	66	15.8%	28	6.7%	6	1.4%	1	0.2%
NOT RANKED=313												

ADMITTED (294)												
	1ST DECILE		2ND DECILE		2ND QUINTILE		3RD QUINTILE		4TH QUINTILE		5TH QUINTILE	
	No.	%	No.	%	No.	%	No.	%	No.	%	No.	%
FEMALE	90	71.4%	26	20.6%	9	7.1%	1	0.9%	0	0.0%	0	0.0%
MALE	59	71.1%	16	19.3%	8	9.6%	0	0.0%	0	0.0%	0	0.0%
COMBINED	149	71.3%	42	20.1%	17	8.1%	1	0.5%	0	0.0%	0	0.0%
NOT RANKED=85												

MATRICULATED (60)												
	1ST DECILE		2ND DECILE		2ND QUINTILE		3RD QUINTILE		4TH QUINTILE		5TH QUINTILE	
	No.	%	No.	%	No.	%	No.	%	No.	%	No.	%
FEMALE	21	65.6%	8	25.0%	3	9.4%	0	0.0%	0	0.0%	0	0.0%
MALE	12	75.0%	2	12.5%	2	12.5%	0	0.0%	0	0.0%	0	0.0%
COMBINED	33	68.8%	10	20.8%	5	10.4%	0	0.0%	0	0.0%	0	0.0%
NOT RANKED=12												

CHART XVIII
FIRST-YEAR CLASS, 2004 - MULTICULTURAL
(excludes students who did not self identify)
AVERAGE STANDARDIZED TEST RESULTS

SAT

	APPLIED			ADMITTED			MATRICULATED		
	Verbal	Math	Number	Verbal	Math	Number	Verbal	Math	Number
FEMALE	649	625	201	676	650	114	644	623	23
MALE	632	652	178	655	679	86	605	644	14
COMBINED	641	638	379	667	663	200	629	631	37

ACT

	APPLIED		ADMITTED		MATRICULATED	
	COM	NUM	COM	NUM	COM	NUM
FEMALE	25.1	134	27.2	62	26.6	17
MALE	26.2	71	28.5	32	27.3	6
COMBINED	25.5	205	27.6	94	26.8	23

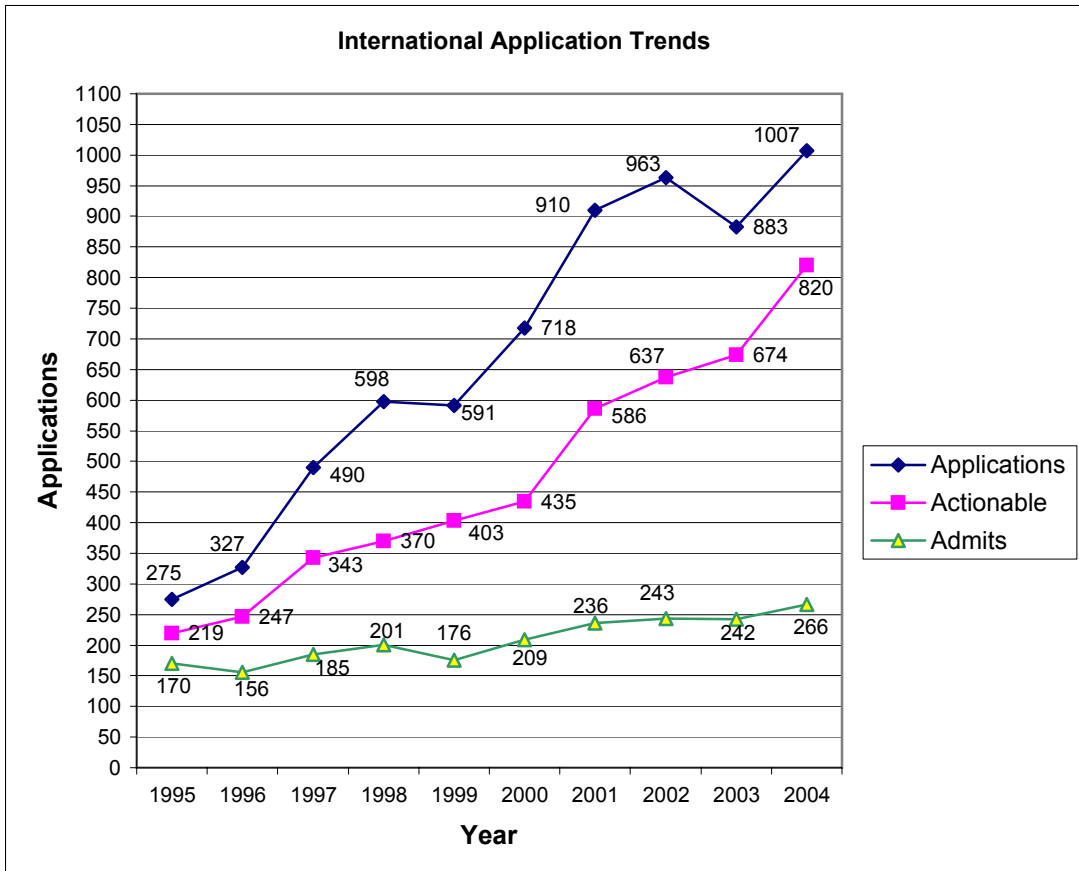
ACT KEY: COM=Composite, NUM=Number

**CHART XIX
INTERNATIONAL REPORT**

Includes only students who are citizens of other countries
U.S. permanent residents and dual citizens are not included.

Year	Inquiries	Applications	Actionable	Admits	Matriculants
1995	1719	275	219	170	43
1996	1730	327	247	156	27
1997	1966	490	343	185	33
1998	2411	598	370	201	27
1999	2241	591	403	176	38
2000	2572	718	435	209	43
2001	3284	910	586	236	62
2002	3811	963	637	243	50
2003	4309	883	674	242	54
2004	4542	1007	820	266	60

Applied and Admitted totals include five (5) deferrals to Fall 2005.



Sixty (60) new international students enrolled, including 3 exchange students, from the following countries: Bahamas, Bangladesh, Belarus, Bulgaria, Cyprus, Dominican Republic, Egypt, Ethiopia, Ghana, Greece, Guatemala, Honduras, India, Iraq, Japan, Kenya, Malaysia, Mexico, Moldova, Mongolia, Morocco, Myanmar, Nepal, Nigeria, P.R. China, Paraguay, Peru, Russia, Syria, Taiwan R.O.C., Thailand, Turkey, Vietnam, and Zimbabwe.

CHART XX
FIRST-YEAR CLASS, 2004 - INTERNATIONAL*
SECONDARY SCHOOL CLASS RANK

APPLIED QUINTILES (912)					
	I	II	III	IV	V
FEMALE	132	15	3	0	0
MALE	123	17	5	2	0
COMBINED	255 (86%)	32 (11%)	8 (3%)	2 (<1%)	0 (0%)
NOT RANKED=615					

ADMITTED QUINTILES (244)					
	I	II	III	IV	V
FEMALE	53	4	0	0	0
MALE	44	2	1	0	0
COMBINED	97 (93%)	6 (6%)	1 (1%)	0 (0%)	0 (0%)
NOT RANKED=140					

MATRICULATED QUINTILES (47)					
	I	II	III	IV	V
FEMALE	12	3	0	0	0
MALE	8	1	1	0	0
COMBINED	20 (80%)	4 (16%)	1 (4%)	0 (0%)	0 (0%)
NOT RANKED=22					

* Revised 2/14/05

**CHART XXI
CLASS OF 2004 - INTERNATIONAL
AVERAGE TEST RESULTS**

TEST OF ENGLISH AS A FOREIGN LANGUAGE (TOEFL)

	APPLIED		ADMITTED		MATRICULATED	
	TOEFL	Number	TOEFL	Number	TOEFL	Number
FEMALE	264	279	273	77	270	23
MALE	265	303	271	79	265	19
COMBINED	265	582	272	156	268	42
NOT INCLUDED		425		110		18

All TOEFL scores have been converted to the
computer-based scale.

**CHART XXII
FIRST-YEAR CLASS, 2004 - INTERNATIONAL
AVERAGE STANDARDIZED TEST RESULTS**

SAT

	APPLIED			ADMITTED			MATRICULATED		
	Verbal	Math	Number	Verbal	Math	Number	Verbal	Math	Number
FEMALE	599	672	324	652	716	114	625	709	22
MALE	580	690	416	627	731	120	590	705	23
COMBINED	588	682	740	639	724	234	607	707	45

ACT

	APPLIED		ADMITTED		MATRICULATED	
	COM	NUM	COM	NUM	COM	NUM
FEMALE	26.2	21	29.4	7	29.0	2
MALE	28.7	9	29.0	3	0.0	0
COMBINED	27.0	30	29.3	10	29.0	2

ACT KEY: COM=Composite, NUM=Number

**CHART XXIII
FIRST-YEAR CLASS, 2004
PUBLIC AND NON-PUBLIC SCHOOLS**

		APPLIED	ADMITTED	% ADMITTED	MATRICULATED	%MATRICULATED
FEMALE	PUBLIC	1172	555	47.4%	176	31.7%
	NON-PUBLIC	641	258	40.2%	55	21.3%
	UNKNOWN	27	13	48.1%	7	53.8%
	Total	1840	826		238	

		APPLIED	ADMITTED	% ADMITTED	MATRICULATED	%MATRICULATED
MALE	PUBLIC	947	442	46.7%	150	33.9%
	NON-PUBLIC	737	226	30.7%	44	19.5%
	UNKNOWN	28	7	25.0%	3	42.9%
	Total	1712	675		197	

		APPLIED	ADMITTED	% ADMITTED	MATRICULATED	%MATRICULATED
COMBINED	PUBLIC	2119	997	47.1%	326	32.7%
	NON-PUBLIC	1378	484	35.1%	99	20.5%
	UNKNOWN	55	20	36.4%	10	50.0%
	Total	3552	1501		435	

**ILLUSTRATION D
ENROLLMENT BY HIGH SCHOOL TYPE
FIRST-YEAR CLASS**

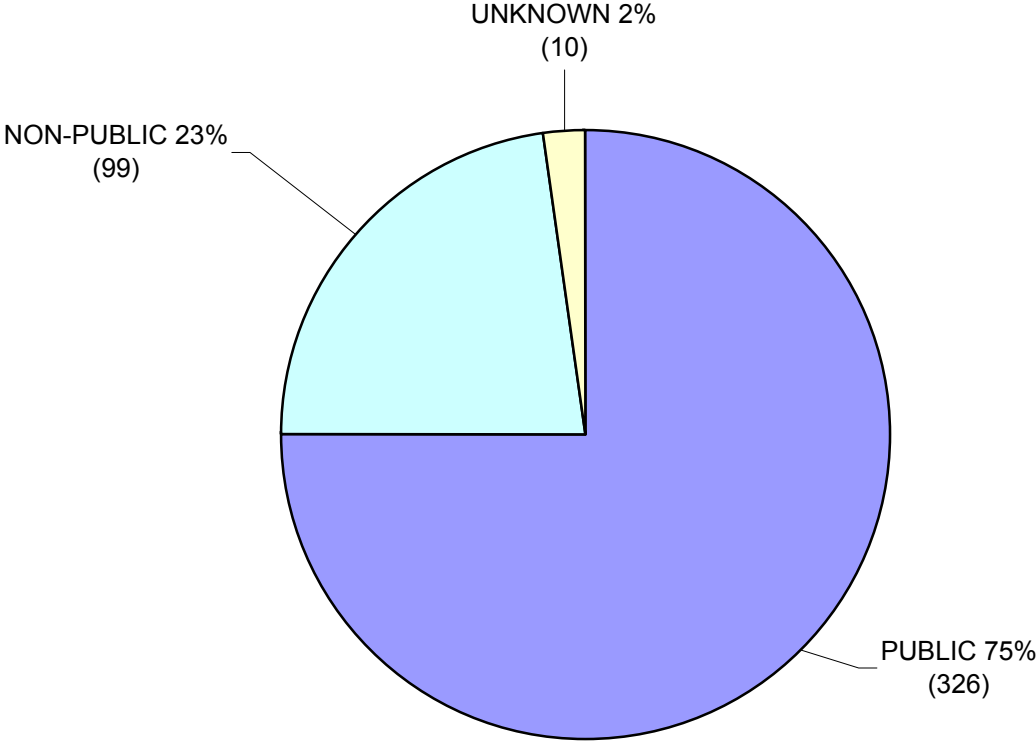


CHART XXIV
WAITING LIST STATISTICS - FALL SEMESTERS, 1994-2004

	NO. PLACED ON WAITING LIST	ADMITTED	% ADMITTED	MATRICULATED	% MATRICULATED
1994	215	2	0.9%	1	50.0%
1995	167	68	40.7%	26	38.2%
1996	128	32	25.0%	14	43.8%
1997	195	4	2.1%	0	0.0%
1998	249	14	5.6%	4	28.6%
1999	144	45	31.3%	11	24.4%
2000	222	64	28.8%	31	48.4%
2001	152	68	44.7%	29	42.6%
2002	146	28	19.2%	11	39.3%
2003	244	1	0.4%	1	100.0%
2004	512	29	5.7%	22	75.9%

CHART XXV
FIRST-CHOICE MAJOR, 2000-2004
Top seven disciplines

2000 (class of 391)		2001 (class of 401)		2002 (class of 398)		2003 (class of 418)		2004 (class of 454)	
English	54	Biology	50	English	50	Biology	49	Biology	54
Biology	50	English	40	Biology	44	English	38	English	44
Psychology	34	Computer Studies	31	Political Science	31	History	27	Math	27
History	32	History	27	History	30	Political Science	23	Political Science	24
Computer Studies	26	Political Science	25	Economics	18	Psychology	19	Psychology	22
Math	18	Psychology	25	Psychology	18	Economics/Math	16	History	19
Physics/Political Science	13	Economics	20	Physics/Philosophy	16	Computer Science	15	Physics	15

CHART XXVI
Extracurricular Profile of the Class of 2008

